



Cyberbullying in Canada

Valerie Steeves
University of Ottawa



Young Canadians in a Wired World Qualitative Focus Groups, 2011

- 4 focus groups in 3 cities
 - children aged 11-12
 - children aged 13-14
 - children aged 15-17
 - parents
- total of 66 children and 21 parents

Young Canadians in a Wired World Quantitative Survey, 2013

- 5,436 children aged 11-17
- every province and territory across Canada

Table 1: Connecting to the Internet outside of school¹

How do you connect to the Internet when you are NOT at school?	Percentage
A desktop computer I share with my family (for example, in the kitchen or family room) ^{Grade}	50%
My own desktop computer ♂♀	22%
A portable computer (for example, laptop, netbook, iPad) ♂♀ ^{Grade}	68%
A computer at the library or a community centre (for example, Boys and Girls Club)	6%
MP3 player (for example, iPod Touch) ^{Grade}	47%
Cell phone / smart phone ^{Grade}	45%
Game console (for example, Wii, Xbox, PlayStation) ♂♀ ^{Grade}	42%
I only go on the Internet when I'm at school	1%

Figure 4: Cell/Smart phone access: Grade

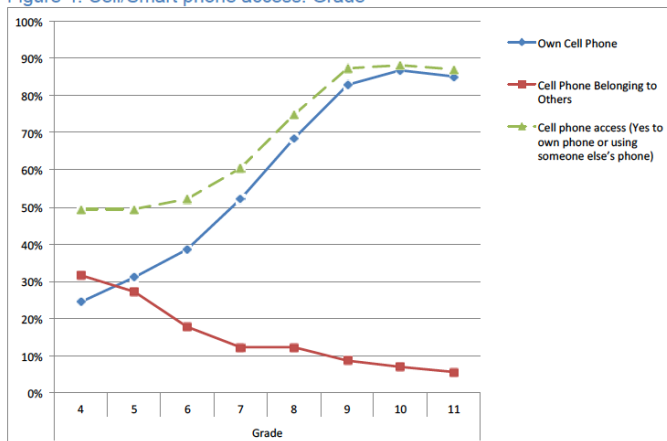


Table 5: Finding information online

Do you use the Internet to find information about these?	Percentage
News and current events ^{Grade}	49%
Sports ♂♀	47%
Entertainment news and celebrities ♂♀ ^{Grade}	43%
Mental health issues ♂♀ ^{Grade}	11%
Sexuality ♂♀ ^{Grade}	8%
Physical health issues ♂♀ ^{Grade}	18%
Relationship problems (for example, advice on dating, getting along with family or friends, dealing with bullies) ♂♀ ^{Grade}	14%
I do not use the Internet to find information about any of these ♂♀ ^{Grade}	22%

Table 8| What are students doing online?

Do you do the following things online?	At least once a day	At least once a week	At least once a month	At least once a year	Less than once a year	Never
Post comments or pictures on your own social network site (for example, your Facebook profile) ♂♀ Grade	17%	24%	20%	7%	4%	28%
Read or post on other people's social network sites (for example, Facebook) ♂♀ Grade	30%	22%	12%	4%	3%	28%
Prank or troll someone ♂♀ Grade	10%	10%	12%	9%	9%	51%
Post your own tweets on Twitter ♂♀ Grade	12%	9%	7%	3%	4%	66%
Follow friends or family on Twitter ♂♀ Grade	12%	9%	7%	4%	3%	65%
Follow celebrities on Twitter ♂♀ Grade	12%	8%	8%	4%	3%	64%
Play online games ♂♀ Grade	31%	28%	19%	8%	5%	9%
Download or stream music, TV shows or movies (grade 7-11 only) ♂♀ Grade	24%	27%	21%	8%	5%	15%

Figure 13| Do you have an account on the following sites? Grade

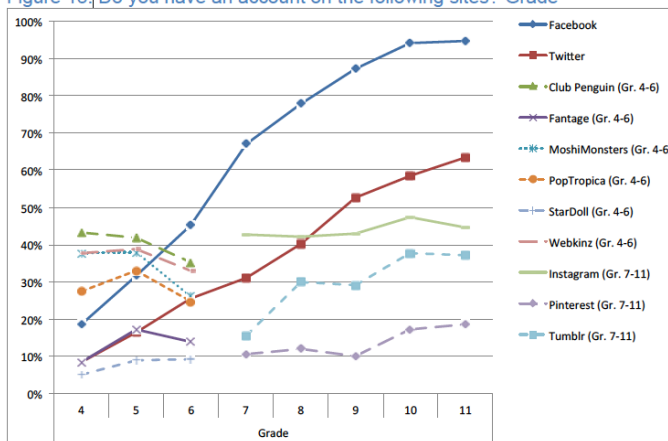


Figure 1: Being mean or cruel online: Grade

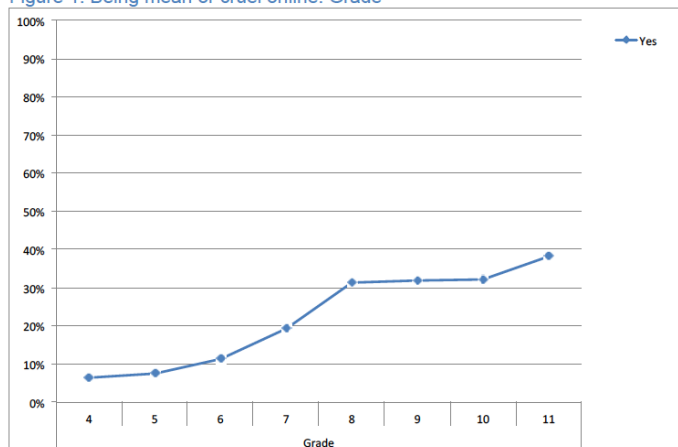
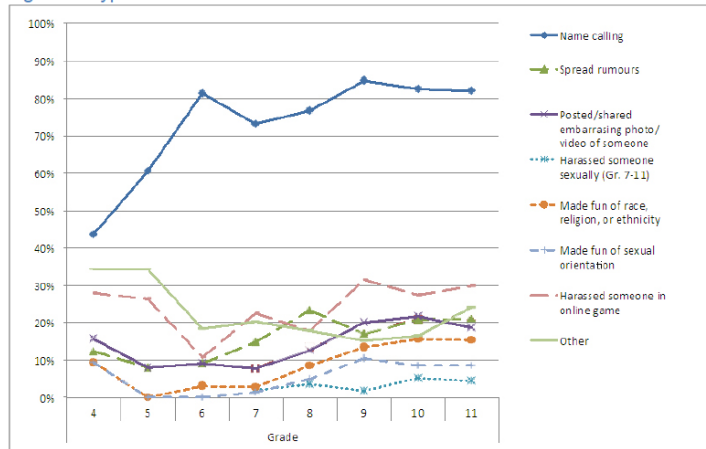


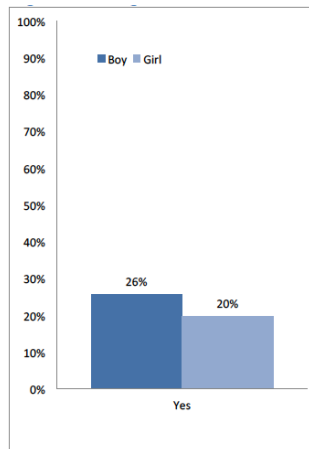
Table 1: Types of mean or cruel online behaviours

If you answered Yes, what did you do?	Percentage Yes
Called someone a name ^{Grade}	78%
Spread rumours	20%
Posted or shared an embarrassing photo or video of someone else	16%
Harassed someone sexually (said or did something sexual when the person did not want you to) (grade 7-11 only)	4%
Made fun of someone's race, religion or ethnicity ♂♀ ^{Grade}	12%
Made fun of someone's sexual orientation ♂♀	7%
Harassed someone in an online game ^{Grade} ♂♀	26%
Other	20%

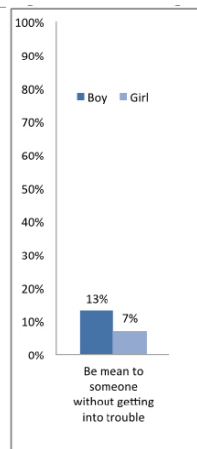
Figure 3: Types of mean or cruel online behaviours: Grade



Being mean or cruel online: Gender



Pretending to be someone else to be mean: Gender



Being the recipient of mean or cruel behaviour: Gender

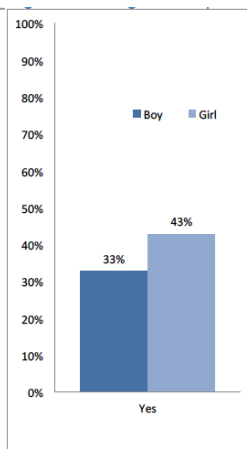


Figure 7: Mean or cruel online behaviours: Gender

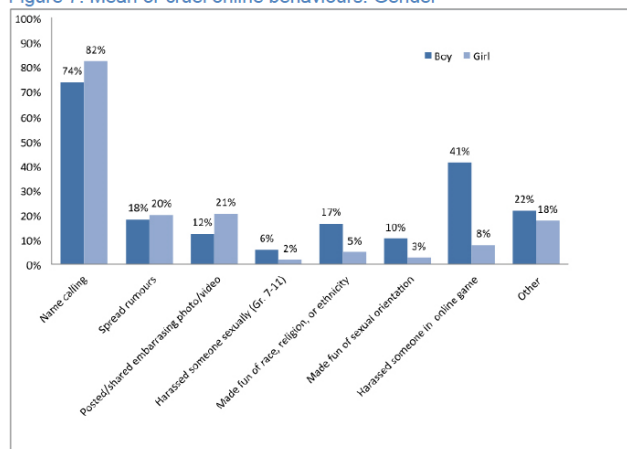


Table 2: Reason(s) for being mean or cruel online

If you answered Yes, why did you do it?	Percentage Yes
I was just joking around	55%
The person said something mean and cruel about me first	48%
The person said something mean and cruel about my friend first	32%
I wanted to get even with the person for another reason	22%
My friends were doing it	8%
I was bored ♂♀	15%
I was angry	25%
I did not like the person	32%
Other	12%
I don't know	5%

Figure 8: Reason(s) for being mean or cruel online: Gender

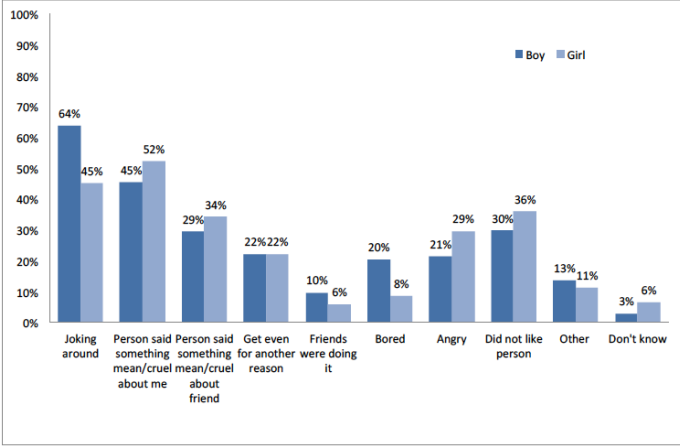


Table 3: Problems with mean or cruel online behaviour

If you answered Yes, how often was it a serious problem for you? ♂♀	Percentage
Often	9%
Sometimes	21%
Rarely	56%
Never	14%

Table 1: Racism and sexism online

Have you seen racist or sexist things online? ^{Grade}	Percentage
At least once a day	16%
At least once a week	21%
At least once a month	21%
At least once a year	11%
Less than once a year	8%
Never	22% [¶]

Table 3: Attitudes to racism or sexism online

Do you agree or disagree with the following statements about racist or sexist online content?	Agree Percentage
It is important to say something so people know it's wrong.	78%
People say racist and sexist things to pick on other people.	69%
I don't say anything because, most of the time, people are just joking around. ^{♂♀, Grade}	57%
People say racist and sexist things because they are insensitive, but not because they mean to hurt anyone. ^{Grade}	52%
When you see something racist or sexist online, it's important to tell an adult. ^{♂♀, Grade}	47%
When people say something racist or sexist about me as a joke, it hurts my feelings. ^{♂♀, Grade}	46%
It is wrong, but it's not my place to say anything. ^{Grade}	45%
My friends and I say racist and sexist things to each other online, but we don't mean anything by it. ^{♂♀, Grade}	44%

Table 6: Responses to mean or cruel online behaviours

What would you do if someone said something mean or cruel to you online?	Percentage
It would not bother me so I would not do anything. ♂♀ ^{Grade}	27%
I would ignore it and hope it would go away. ♂♀	42%
I would talk face-to-face with the person who posted it. ^{Grade}	35%
I would privately email/message the person who posted it. ♂♀ ^{Grade}	23%
I would post something about it online.	7%
I would ask my friends for help. ♂♀ ^{Grade}	38%
I would ask my parent(s) for help. ♂♀ ^{Grade}	50%
I would ask my teacher for help. ♂♀ ^{Grade}	17%
I would ask another adult I know and trust. ♂♀ ^{Grade}	25%
I would call the police. ^{Grade}	11%
Other ♂♀	19%

Table 10: Helping someone being picked on online

When someone has said something mean or cruel online to someone else, have you ever done anything to help the person who is being picked on?	Percentage Yes
Overall ♂♀ ^{Grade}	65%
Students who have been recipients of mean/cruel comments or threats	78%
Students who have not been recipients of mean/cruel comments or threats	52%
Students who have made mean/cruel comments or threats	75%
Students who have not made mean/cruel comments or threats	61%

Figure 33: Helpfulness of cyberbullying policies and rules for those who have been the recipient of mean/cruel or threatening behaviour

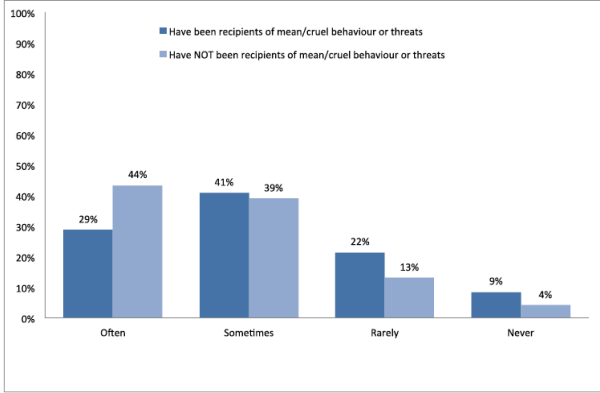


Figure 35: Respect rule and being mean or cruel to someone online

